

# Red Onion Cell Station

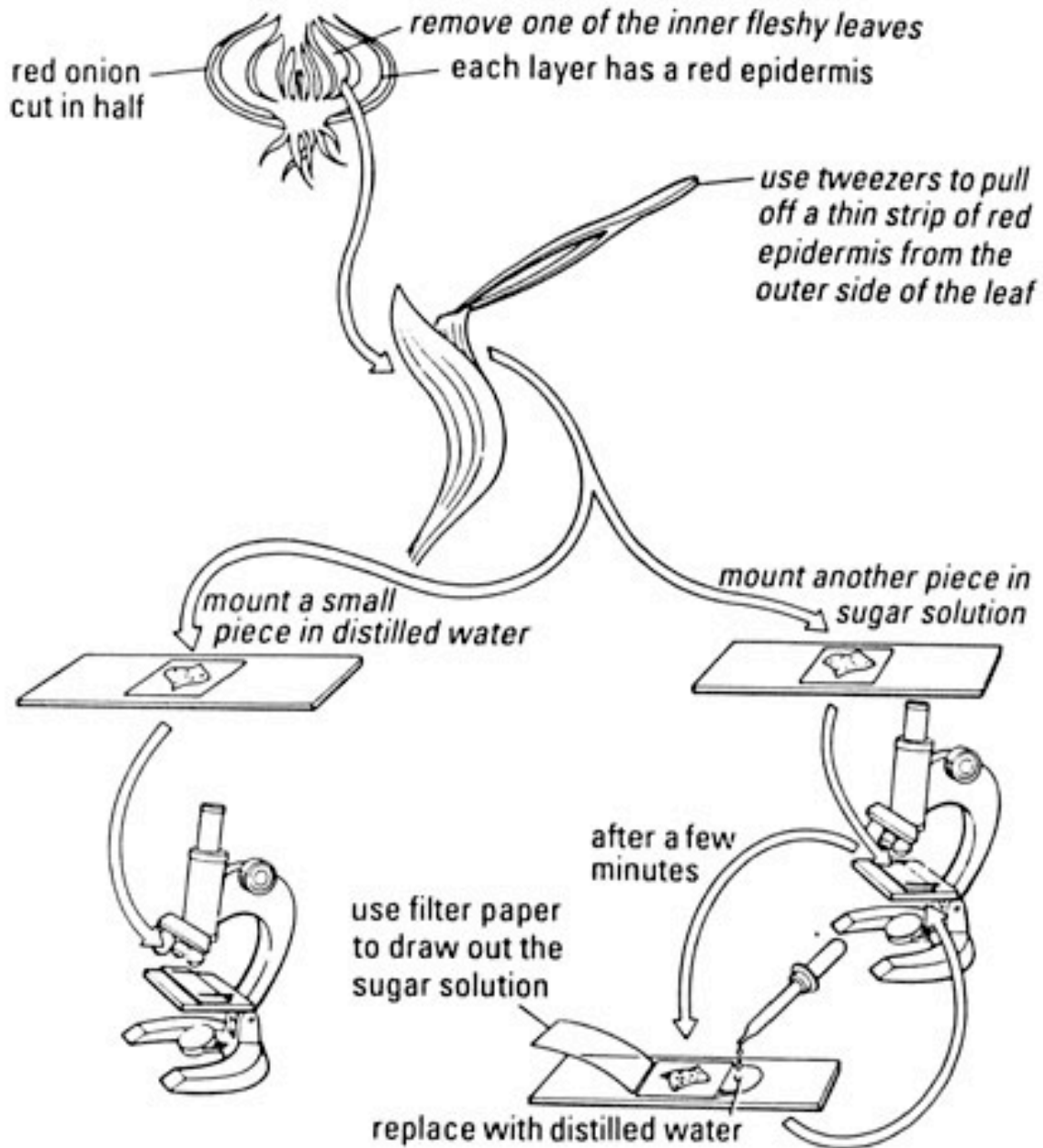


Diagram: <http://www.nuffieldfoundation.org/practical-biology/observing-osmosis-plasmolysis-and-turgor-plant-cells>

\*\*We will be using *salt*, instead of sugar, solution

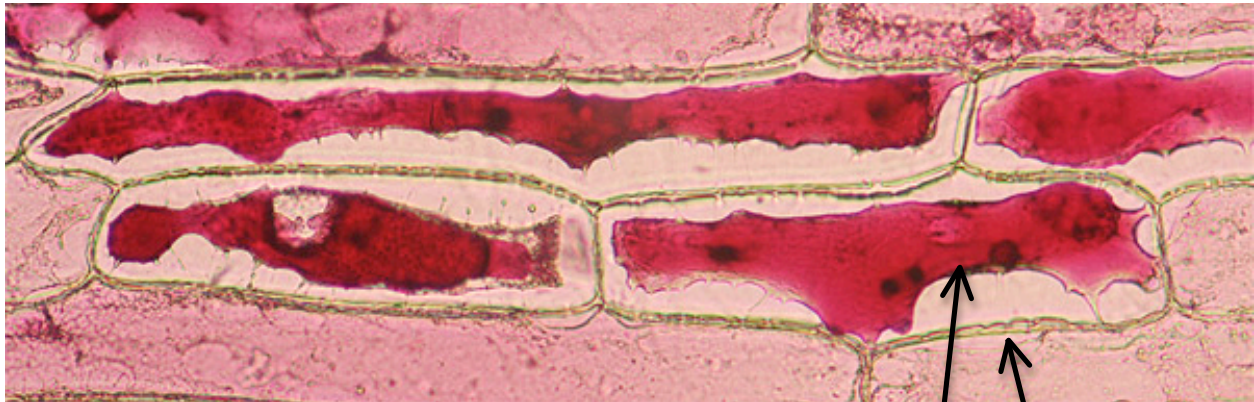
# Red Onion Cell: What to Expect

Photos: [http://www.microbehunter.com/wp/wp-content/uploads/2009/onion\\_plasmolysis3.jpg](http://www.microbehunter.com/wp/wp-content/uploads/2009/onion_plasmolysis3.jpg)



**In Distilled Water**

Cell Membrane    Cell Wall



**In Salt Solution**

Cell Membrane    Cell Wall